



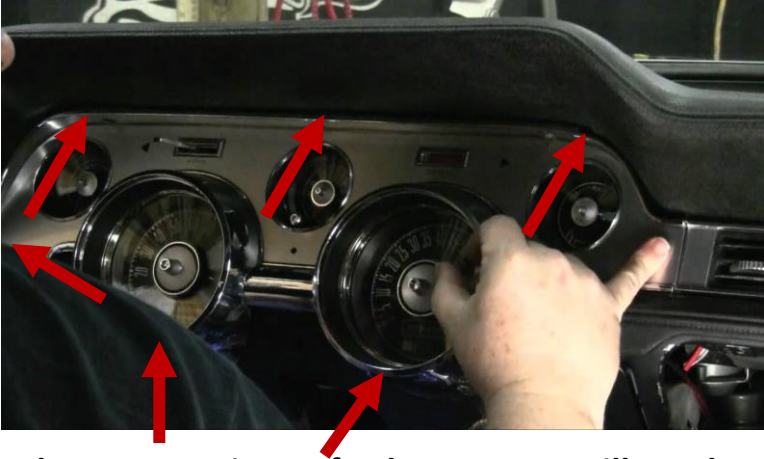
## 67-68 MUSTANG DIRECT FIT INSTALLATION INSTRUCTIONS FOR WIRED & D.I.Y. KITS



# GAUGE INSTALL

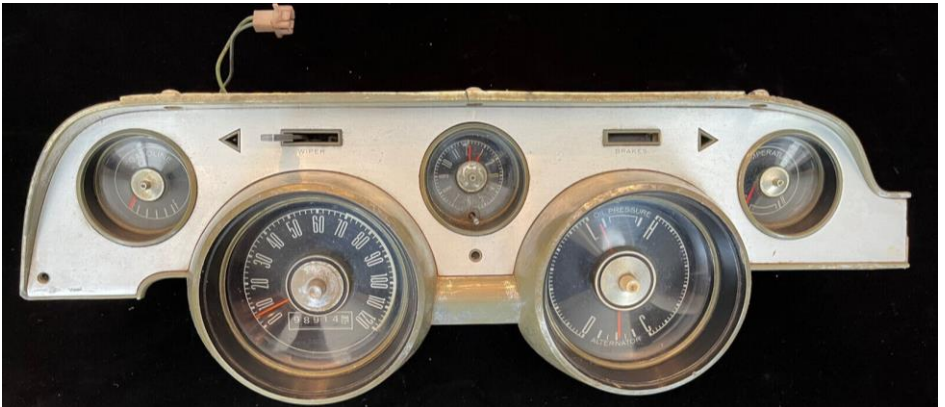
**STEP 1: Find the 6 Phillips head screws holding the factory bezel in.**

**There will be a total of 6 screws to remove at this stage**



**\*Put these screws in a safe place, as you will need to reuse four of them when you re install your bezel**

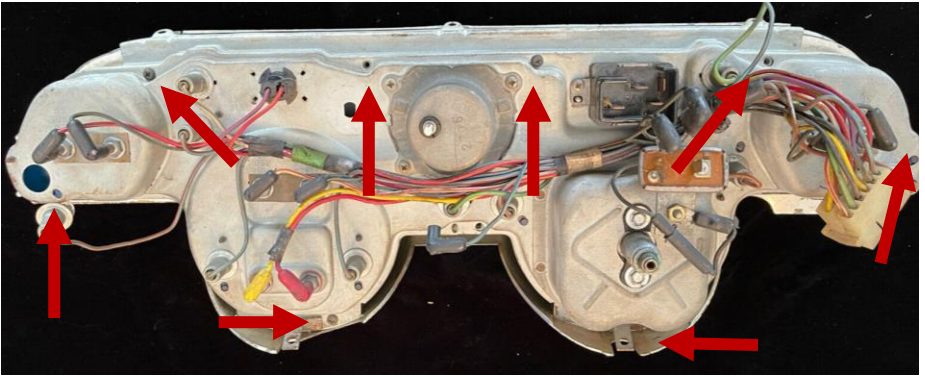
**STEP 2. Unclip the factory harnesses and plugs as well as the Speedo cable from the back of the cluster and pull cluster from the dash.**



## GAUGE INSTALL

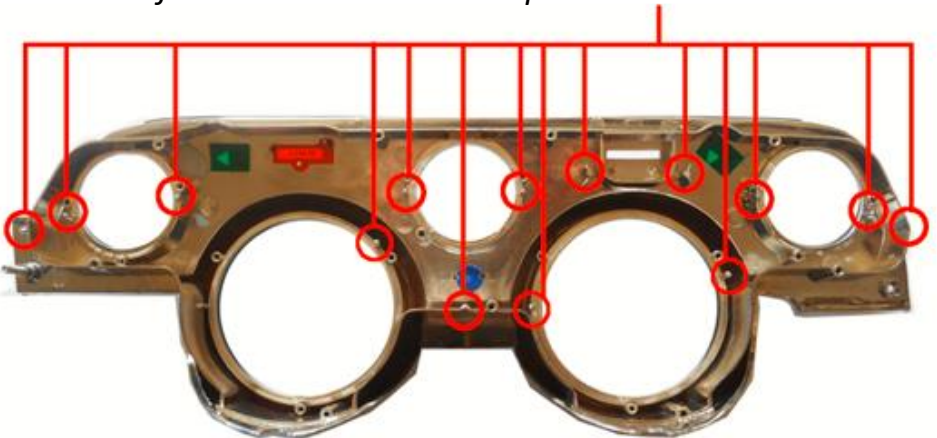
**STEP 3: Remove the factory fasteners holding the factory instruments to the bezel. Remove all connectors and lights at this point**

*Save these fasteners as you can reuse them later*



**STEP 3.1: Now you have removed the Bezel, next Remove standoffs on bezel where indicated (use wire cutters)**

*Skipping this step will not allow the panel to sit flush for reinstall of the NVU in the next steps*



## GAUGE INSTALL

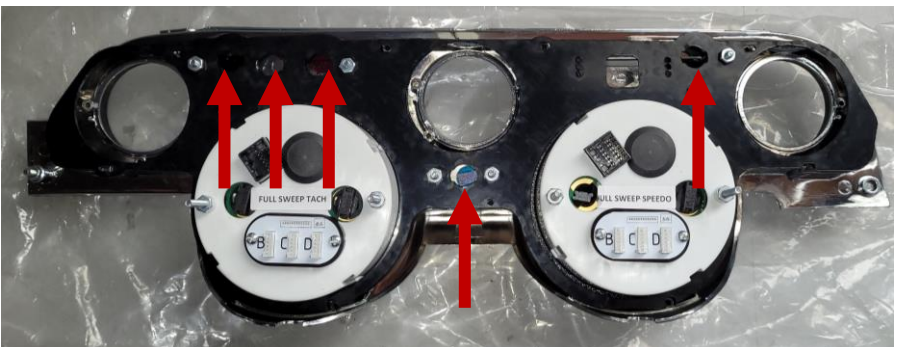
**STEP 3.2:** Now you have removed the standoffs, place gauges down into gauge holes(use 3 spacer rings per side)



**STEP 3.3:** Place NVU bracket onto panel with the bulbs spacers towards the bezel



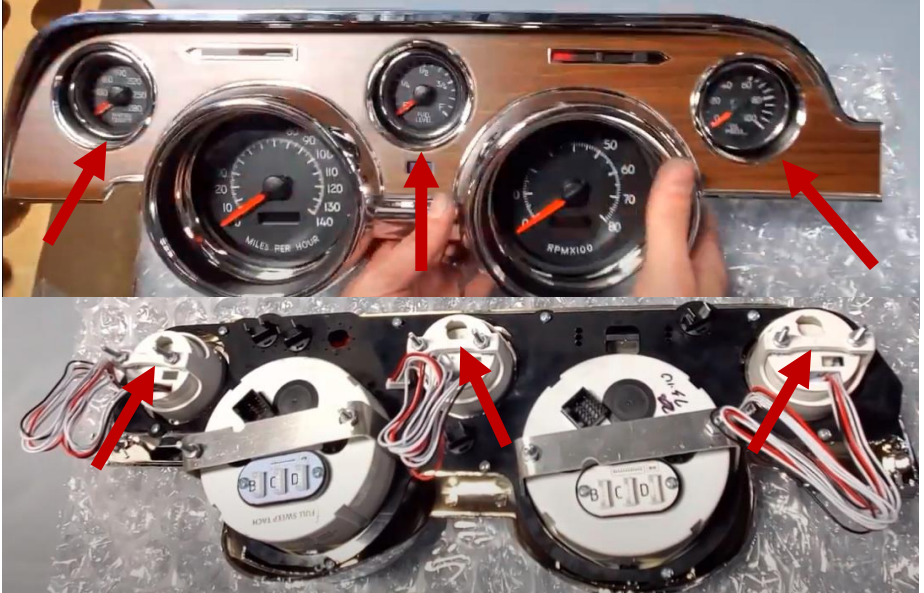
Place Included bulb holder into the cutouts on the NVU Direct Fit bracket



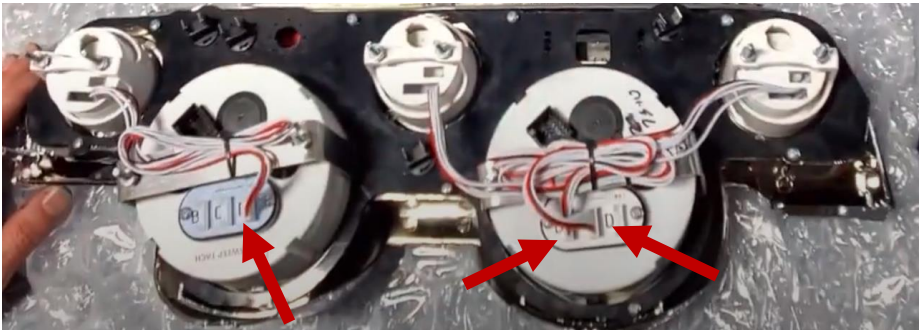
## GAUGE INSTALL

**STEP 3.4: Place 2" gauges through the front of the bezel**

*Secure with back clamps and included fasteners*



**STEP 3.5: Connect 2" Jumper wires to the Speedo & Tach as shown below**  
*as shown below*

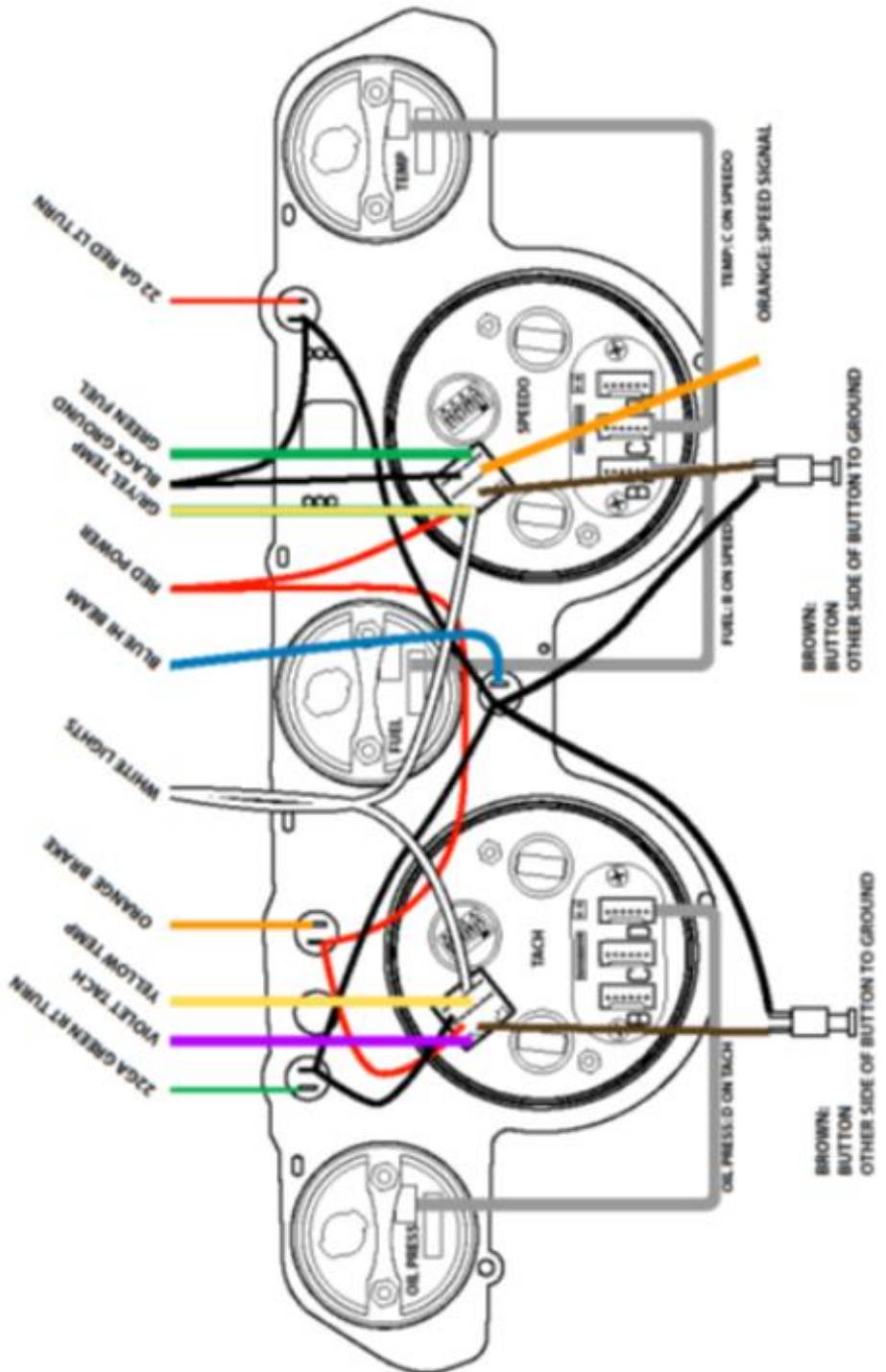


**STEP 3.6: Apply included strip to the top of bezel**



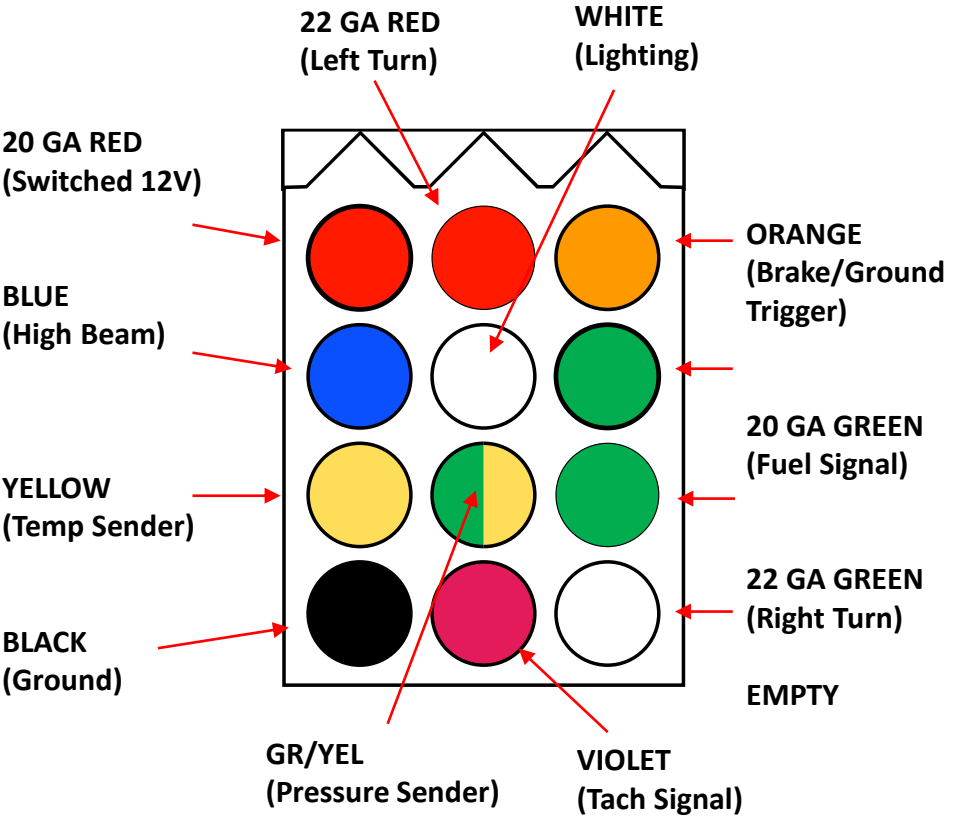
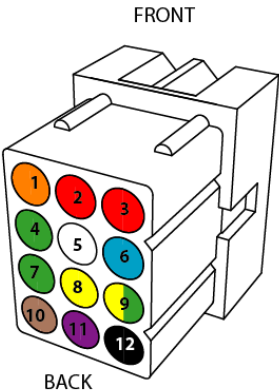
*Proceed to next page for Wiring*

# WIRING(DIY KITS)



# WIRING (PRE-WIRED KITS ONLY)

POS	COLOR
1	ORANGE 20 GA
2	<b>RED 22 GA</b>
3	RED 20 GA
4	GREEN 20 GA
5	WHITE 20 GA
6	BLUE 20 GA
7	<b>GREEN 22 GA</b>
8	YELLOW 20 GA
9	GR/YELLOW 20 GA
10	BROWN 20 GA
11	VIOLET 20 GA
12	BLACK 20 GA





**NEW VINTAGE USA  
21840 WYOMING PL STE. A  
OAK PARK, MI 48237  
VOICE: 248.850.5482  
FAX: 248.565.8291**

**[www.newvintageusa.com](http://www.newvintageusa.com)  
[service@newvintageusa.com](mailto:service@newvintageusa.com)**