



**NEW VINTAGE USA**  
**DETROIT**

**99-04 MUSTANG GAUGE OVERLAY KIT  
INSTALLATION GUIDE**



Your NVU gauge overlay is designed to replace your original cluster graphic overlay perfectly. This product is made using the same processes we use for OEM applications and has built-in light diffusion to light evenly and brighter than the original. In OE clusters with LED lighting, no lamp change is required. Clusters with Incandescent bulbs, the change is not required but for maximum brightness, LED bulbs are suggested-sold separately. Remember, when replacing incandescent bulbs for your incandescent, there are 2 things to consider:

1. Your stock dimmer will not dim the lamps, you will need to have the dimmer turned all the way up at all times.
2. LED bulbs are polarity sensitive, which means they only work one way in the socket. Once the bulbs are installed, power the lights to make sure they are all installed properly. If a lamp does not illuminate, remove the socket and install 180 degrees so that the polarity is reversed,. Try lighting again.

#### Contents:

1 ea 99-04 Mustang gauge overlay

2 ea pointer stops

1 ea instruction sheet

#### Tools required:

#2 Phillips Head Screwdriver, Small Standard Head Screwdriver, Driver for included T-8 and T-15 Torx bits, Pliers, 7mm Socket Driver

#### STEP 1. CHECK CLAIBRATION

Start the vehicle and allow to warm up. Take a photo of the gauge cluster pointer positions. This will be where the pointers are installed later during final installation. Hint: Re-use the same pointers on the same gauge as often they will go back in the same position, just makes life easier.



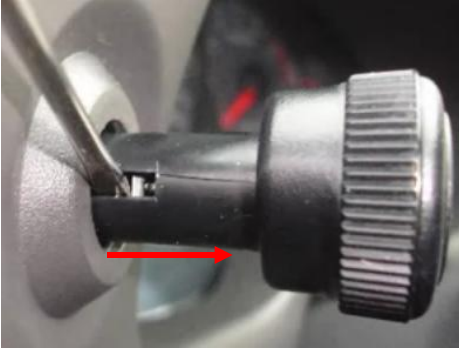
## CLUSTER REMOVAL

Disconnect the battery ground (-) cable, set parking brake and chock wheels.

Remove the instrument cluster trim by the following steps.

A. Tilt the steering wheel all the way down

B. Remove the headlamp switch knob by inserting a small tool or flat blade screwdriver in the slot on the side of headlamp switch knob. Slide the tool along the slot moving towards the front end of the knob and pull the knob away from the dash to release the knob from the shaft.



C. Remove the two black screws from the top-inside of the instrument panel trim with a T-15 Torx Bit or a 7mm Socket depending on year of the vehicle.

D. Carefully pull instrument panel trim away from the dashboard by pulling directly outward on the panel. Carefully slide the panel out from behind the steering wheel and set aside.



## REMOVE CLUSTER

Remove the four screws in the top and bottom outer corners of the instrument cluster with a T-15 Torx Bit or a 7mm socket driver



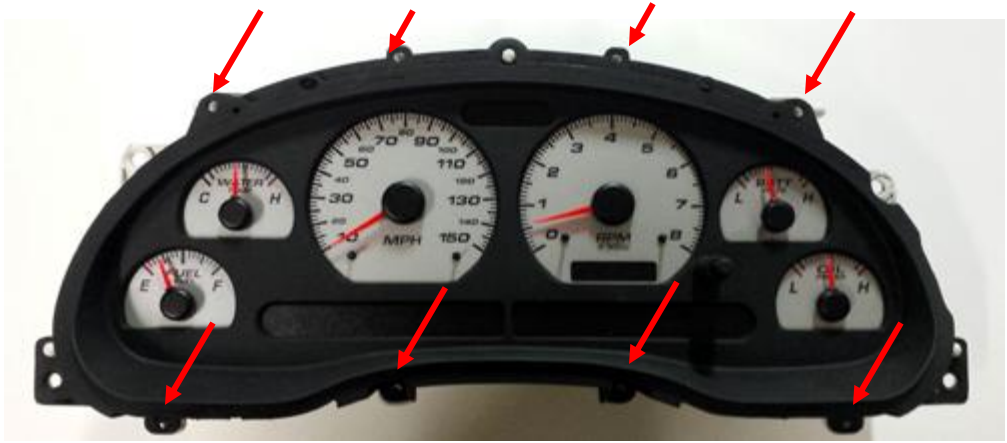
Carefully pull the cluster slightly forward and tilt it back and upwards allowing room to remove the wiring harness/plugs



Disconnect the two harness connectors from the backside of the cluster.

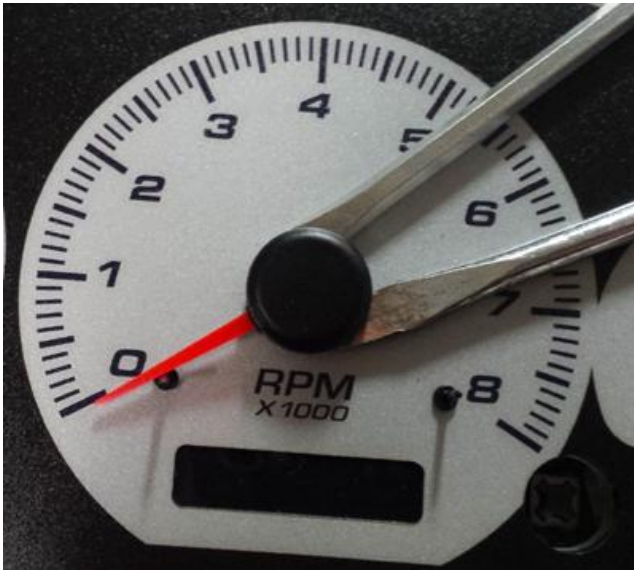
Remove the cluster from the vehicle.

Remove the cover bezel and lens by removing the screws around the perimeter



#### POINTER REMOVAL:

Generally the pointers can be pulled off without any tools. In the event that you need more force to remove the pointers, use 2 flat blade screwdrivers or similar flat items. If required the dial face can be protected with tape or thin cardboard.



Pull original overlay off of cluster, it is heat staked to the clear refractor in several places. Just rip it off. Any remnants of the original overlay will need to be removed so that the surface is flat.



## INSTALLATION

Clean clear refractor mounting surface with alcohol. Blow any dust off with compressed air.

Test fit cluster before removing the adhesive on the back of the overlay.

Loose install overlay on cluster. Place cover bezel/lens on top and check for proper alignment. This cluster has some “slop” built into the locators so that each overlay alignment can be fine tuned for individual fitment.

Once you are satisfied with alignment, remove cover bezel and overlay. Remove 3M adhesive from back and re-install overlay in same position.





Install pointer stops by snapping into holes cut into overlay



### CALIBRATION

Do not install cover bezel/lens at this time

Plug cluster into vehicle.

Start vehicle and warm up.

Install pointers in original position, as noted in the photo in step 1. Make sure pointers rotate freely and do not hit the dial face, keep .030"-.050" up from dial face.



.030"-.050" clearance



Install cover bezel/Lens, plug s installed, re-install in vehicle in the reverse order,  
ENJOY!

Optional LED installation on next page

## OPTIONAL (HIGHLY RECCOMENDED) LED BULB INSTALLATION

This cluster uses wedge base bulbs the replacement number is a #74. Try to use a bulb that has 360 degree coverage for the best results. NVU recommends using white LED bulbs to light the clusters. Do not replace the warning lamp bulbs with LEDS, you may cause current errors in the vehicle and the functions may not operate properly.



Remove the 5 bulb sockets from the rear of the cluster by grasping the socket with needle nose pliers and rotating counter-clockwise ¼ turn. Remove socket(s)

Pull incandescent bulb out of the socket

Replace with LED bulb

Install and test lighting.

NOTE: 2. LED bulbs are polarity sensitive, which means they only work one way in the socket. Once the bulbs are installed, power the lights to make sure they are all installed properly. If a lamp does not illuminate, remove the socket and install 180 degrees so that the polarity is reversed,. Try lighting again.



NEW VINTAGE USA  
2415 BURDETTE  
FERNDALE, MI 48220  
248.850.5482  
[www.newvintageusa.com](http://www.newvintageusa.com)