



**NEW VINTAGE USA
DETROIT**

**SQUAREBODY TRUCK DASH
BRACKET INSTALLATION INSTRUCTIONS**



73-87 CHEVY/GMC TRUCK PACKAGES

**THANK YOU!
OVER 10,000 SOLD SINCE 2014!**



PRODUCT PAGE WITH
FULL INSTALLATION VIDEOS
AND PLUG WIRING



TECH TIPS:
LS SWAP INSTALL
INFO



TECH TIPS:
SMALL BLOCK CHEVY
INSTALL INFO



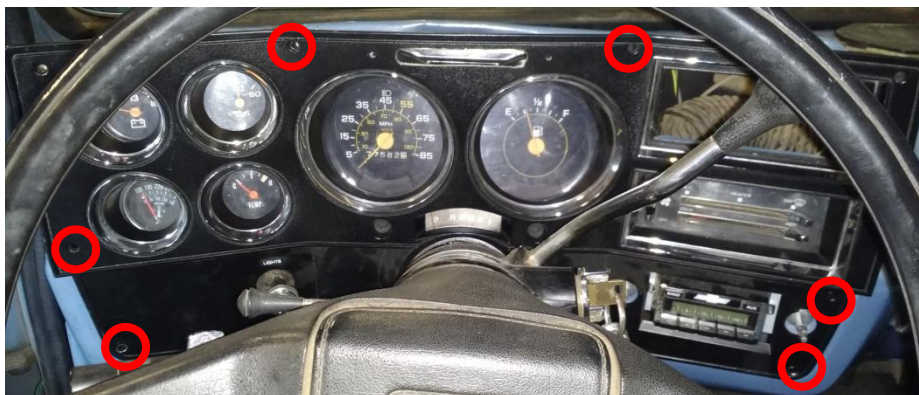
TECH TIPS:
HOLLEY TERMINATOR
/X-MAX INSTALL

This booklet contains the instructions for installing the bracket assembly for 73-87 GM Trucks.

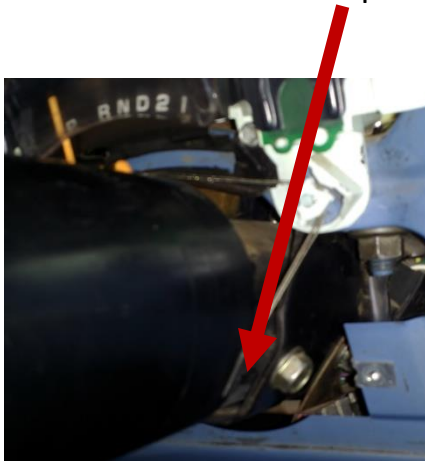
Note: Wire the gauges according to the gauge instruction booklet included with this kit. Test fit and adjust the bracket PRIOR to wiring the gauges. This will provide the best results.

Turn signals are 12V LEDS, black is ground red is 12V+. The bracket will be easier to install with dash pad and/or steering wheel removed. Not required but it makes the job much easier.

Remove screws on plastic Dash and remove.



Disconnect shift mechanism clip



Remove 4 screws holding old instrument cluster.

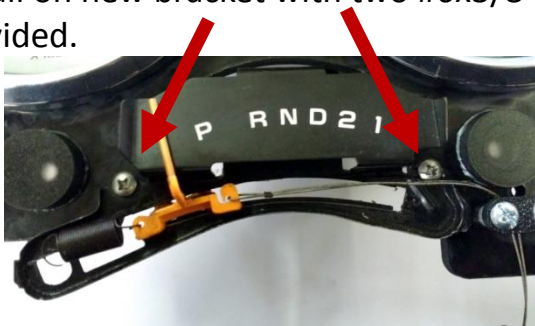


Disconnect Plug on back of old instruments and cable to speedometer. Old instruments can be removed.

Remove shift indicator with 2 screws highlighted from old instruments.



Install on new bracket with two #6x3/8" screws provided.



Assemble side gauge Bracket to Speedo and Tach using two #8x3/8" screws.



Install bracket to dash at top using spacers and #8x3/4" screws. Leave loose for adjustment. Be sure bottom of bracket is behind the dash frame.

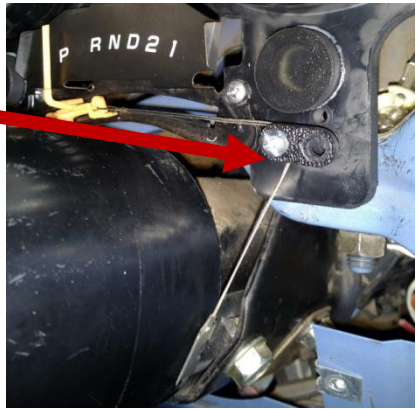


Align slotted hole on left hand side to dash and attach with #8x5/8" screw with a washer.



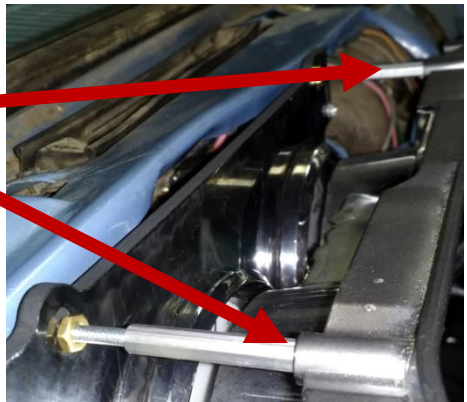
Adjust bracket so speedo and tach are straight and tighten top screws snug, then install one #8x1/2" in bottom right hole. (Bracket should be behind the metal dash. Tighten remaining screws.

Loop shifter string over tab and clip back on steering. Align pointer to left edge of P.



Add 2" spacers provided to screws at top of bracket till they bottom out.

Slide plastic bezel over installed spacers.



Attach plastic bezel to bottom with three Black #8 x 3/4" screws, then install one #8 x 2-1/2" screw to left hand middle bolt hole. Finally, attach plastic bezel to spacers using two #8-32 x 1/2" Black screws provided. Refer to picture below for screw placement.

#8-32 x 1/2" Screws



#8 x 3/4" BLACK Screws

#8 x 2-1/2" BLACK Screw

To align side gauges, leave back clamps slightly loose and install plastic bezel. While sitting in drivers seat, move gauges to center in holes. Once in place, remove plastic bezel, carefully snug back clamps and reinstall. You may have to do this several times to get everything aligned properly. There are variations in vehicles and panels. The NVU bracket assembly is fully adjustable to allow for a perfect fit for YOUR vehicle.

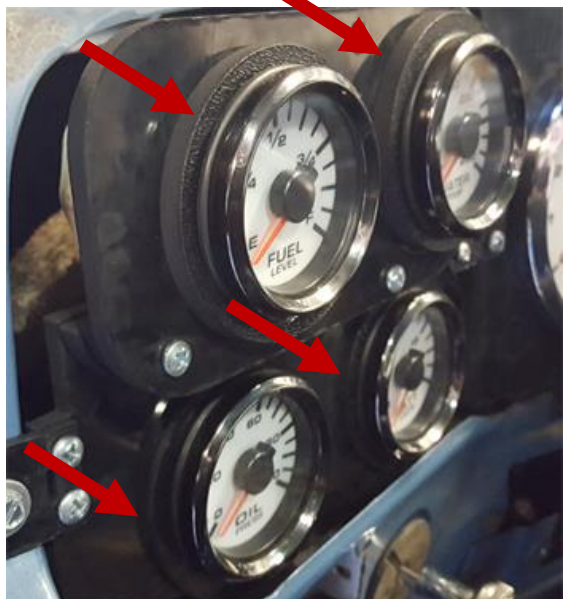
When complete before the bezel is installed, your cluster should look like this.



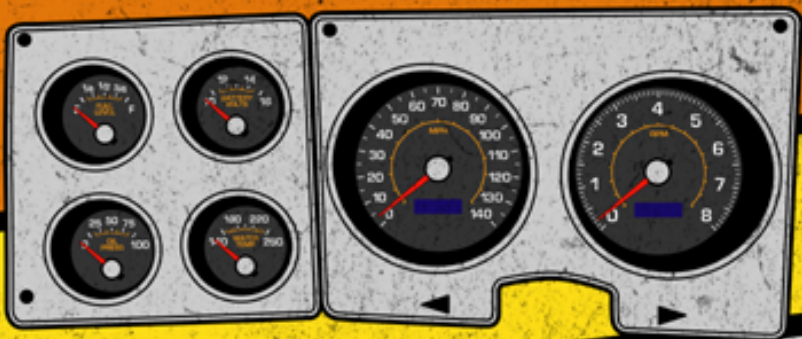
Helpful hint:

Install spacers on small gauges, you can flip $\frac{1}{4}$ and $\frac{1}{8}$ " thickness spacers to achieve the desired set back. NOTE: you must use a spacer on both sides to allow for adjustability.

Spacers shown at right. This truck used $\frac{1}{4}$ on top and $\frac{1}{8}$ on bottom



NEW VINTAGE



M-102 SERIES



NEW VINTAGE USA
21840 WYOMING PL
OAK PARK, MI 48237
VOICE: 248.850.5482
FAX: 248.565.8291

www.newvintageusa.com