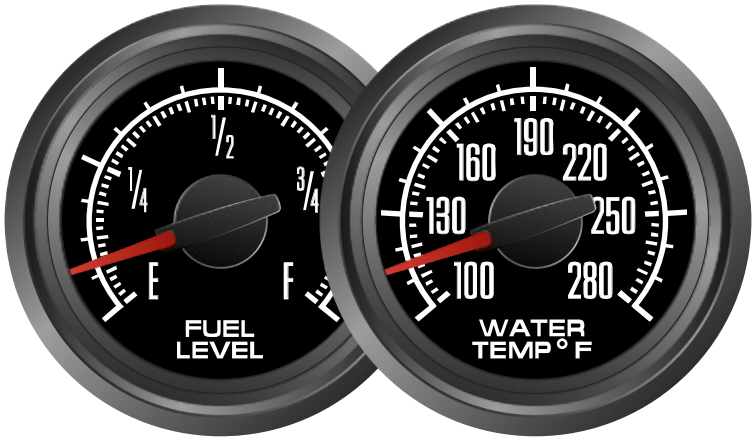




**NEW VINTAGE USA
DETROIT**

A90-2-1/16" INSTRUMENTS

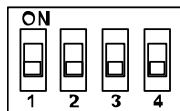


ANALOG INPUT MINOR GAUGES

DIP switches are used on the back of some of the gauges to set ranges for your application. This can be changed at any time but in general they are set at the factory or on site during installation and are left in that position for the life of the vehicle.

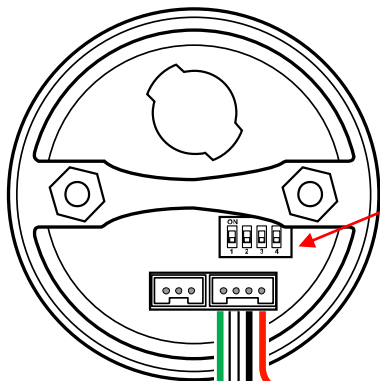
When setting DIP switches, ON should be in the up position.

NOTE: TO CHANGE THE SETTING , AFTER SELECTING THE DIP SWITCH, POWER MUST BE CYCLED OFF/ON FOR THE NEW SETTINGS TO TAKE EFFECT.



FUEL GAUGE:

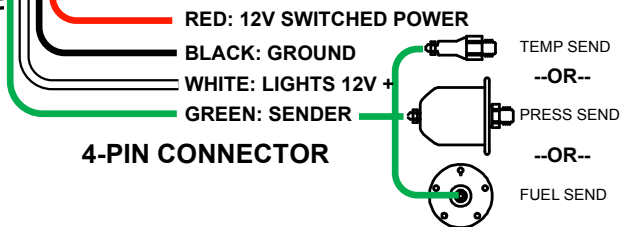
All fuel gauges are programmable by the DIP switches on the driver gauge or the 2-1/16" gauge itself. All fuel gauges and ranges are identical on all instruments. Set the switches as shown in the chart below for your application.



USE CAUTION WHEN WIRING THE 4 PIN CONNECTOR. DO NOT CONNECT POWER TO GREEN WIRE

DIP-SWITCH ACCESS

NOTE: VOLTMETER NO CONNECTION TO GREEN. GAUGE READS POWER FROM RED/BLACK

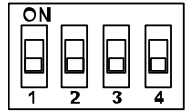


ANALOG INPUT	INPUT Ω	1	2	3	4
OIL PRESS 0-100 PSI	240-33	OFF	OFF	OFF	OFF
WATER TEMPERATURE	500-19	OFF	OFF	ON	ON
OIL/TRANS TEMP	500-19	OFF	ON	OFF	ON
VOLTAGE	10-18V	OFF	ON	ON	ON

SENDER TYPE MAKE/YEAR	RANGE E-F Ω	1	2	3	4
EARLY GM/FORD PRE 65	0-30	OFF	OFF	ON	OFF
GM 65-89	0-90	OFF	ON	OFF	OFF
GM 90S-UP	40-250	OFF	ON	ON	OFF
FORD/AMC/MOPAR 65-86	73-10	OFF	OFF	OFF	ON
FORD 87-UP	20-145	ON	ON	OFF	OFF
UNIVERSAL/SW	240-33	ON	OFF	OFF	OFF
CUSTOM/EARLY FORD	168-15	ON	OFF	ON	OFF

ANALOG INPUT 0-5v OR .5-4.5V INSTRUMENTS

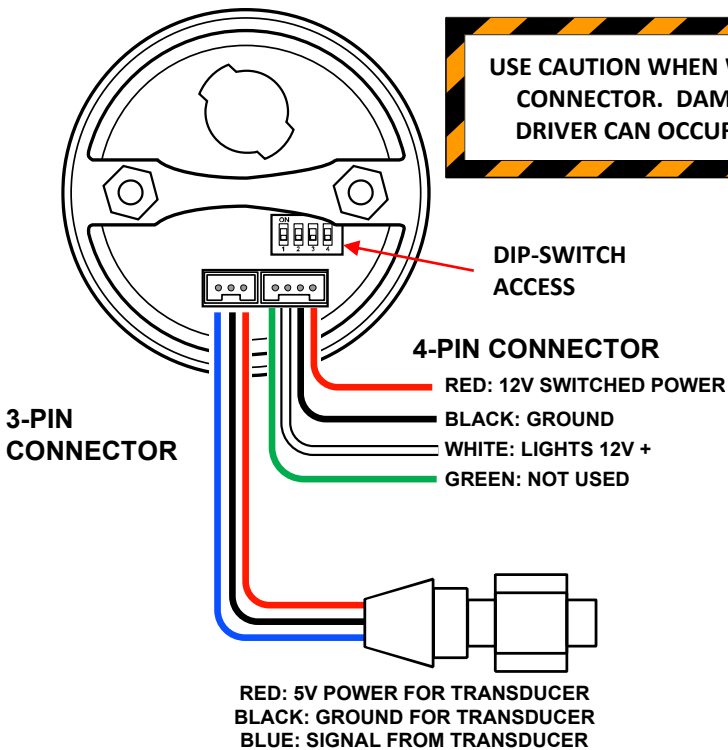
DIP switches are used on the back of some of the gauges to set ranges for your application. This can be changed at any time but in general they are set at the factory or on site during installation and are left in that position for the life of the vehicle. When setting DIP switches, ON should be in the up position.



2-1/16" 0-5V INPUT MINOR GAUGES

This applies to all standalone 2-1/16" gauges with a 0-5 or .5-4.5V input (transducer). The instrument will have BOTH a 4 and a 3 pin plug. The 3 pin plug will power your transducer. Please refer to the chart below for input DIP switch settings required for your application.

Transducers operate on .5-4.5V range. AFR and 0-5V output devices use 0-5V. The input for both ranges should be on the BLUE wire on the 3-pin harness. The GREEN wire on the 4-pin harness is not used.



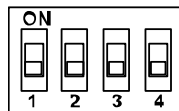
VOLTAGE INPUT	INPUT Ω	1	2	3	4
TRANSDUCER	.5-4.5V	ON	OFF	OFF	ON
0-5 INPUT (AFR, OTHER)	0-5V	ON	OFF	ON	ON

DIP SWITCHES

DIP switches are used on the back of some of the gauges to set ranges for your application. This can be changes at any time but in general They are set at the factory or on site during installation and are left in that position for the life of the vehicle.

When setting DIP switches, ON should be in the up position.

NOTE: TO CHANGE THE SETTING , AFTER SELECTING THE DIP SWITCH, POWER MUST BE CYCTLED OFF/ON FOR THE NEW SETTINGS TO TAKE EFFECT.



FUEL GAUGE:

All fuel gauges are programmable by the DIP switches on the driver gauge or the 2-1/16" gauge itself. All fuel gauges and ranges are identical on all instruments. Set the switches as shown in the chart below for your application.

SENDER TYPE MAKE/YEAR	RANGE E-F Ω	1	2	3	4
EARLY GM/FORD PRE 65	0-30	OFF	OFF	ON	OFF
GM 65-89	0-90	OFF	ON	OFF	OFF
GM 90S-UP	40-250	OFF	ON	ON	OFF
FORD/AMC/MOPAR 65-86	73-10	OFF	OFF	OFF	ON
FORD 87-UP	20-145	ON	ON	OFF	OFF
UNIVERSAL/SW	240-33	ON	OFF	OFF	OFF
CUSTOM/EARLY FORD	168-15	ON	OFF	ON	OFF

2-1/16" ANALOG MINOR GAUGES

This applies to all standalone 2-1/16" gauges. Driven instruments are adjustable at the master gauge on the back under the plug. On the back of the 2-1/16" gauge the switches are visible without removing any covers/plugs.

Analog instruments refer to fuel, temperature, volts and pressure that use a traditional resistance to ground sender (not a transducer). All gauges are set at the factory to match the gauge dial range. The only time the end user will need to change the settings is for the fuel range. Use the settings below as a reference if needed.

ANALOG INPUT	INPUT Ω	1	2	3	4
OIL PRESS 0-100 PSI	240-33	OFF	OFF	OFF	OFF
WATER TEMPERATURE	500-19	OFF	OFF	ON	ON
OIL/TRANS TEMP	500-19	OFF	ON	OFF	ON
VOLTAGE	10-18V	OFF	ON	ON	ON

2-1/16" 0-5V INPUT MINOR GAUGES

This applies to all standalone 2-1/16" gauges with a 0-5 or .5-4.5V input (transducer). The instrument will have BOTH a 4 and a 3 pin plug. The 3 pin plug will power your transducer. Please refer to the chart below for input DIP switch settings required for your application.

VOLTAGE INPUT	INPUT Ω	1	2	3	4
TRANSDUCER	.5-4.5V	ON	OFF	OFF	ON
0-5 INPUT (AFR, OTHER)	0-5V	ON	OFF	ON	ON