



70-76 DART DEMON DUSTER BRACKET INSTALLATION



Fits this style dash only (hexagonal base not long one piece unit)

Remove cluster and bezel as a unit. Be removing the 6 screws. Pull out so you can reach the speedo cable and plug on the back



Pull off the plug and the un-bolt the speedo cable nut, pull out cable. Unplug the wiper and washer switches



To remove the wiper knob, press the release button on the back and pull out



Remove the wiper switch:
Early models have a set screw/button on the knob itself. Later models just pull off.

Both knobs can be removed by bolting the retainer nuts at the base of the switches.

To remove the back housing, loosen and remove the screws securing it.



Cut the heat stakes off with a drill bit or grinder/Dremel tool



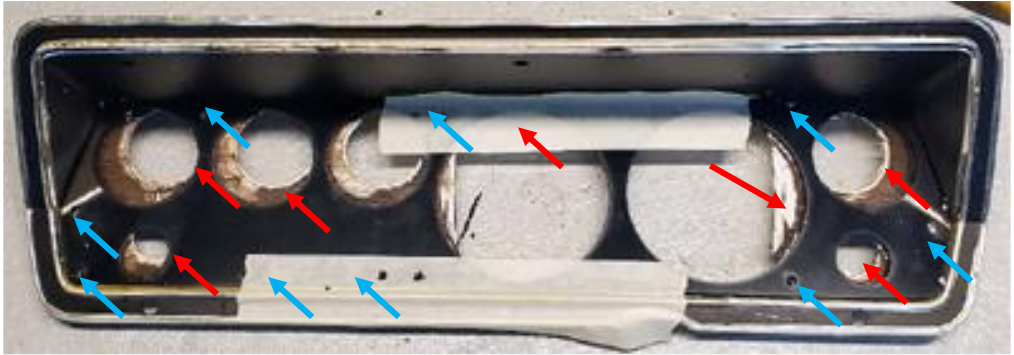
Pull the lenses and pieces from the back of the bezel



Grind/sand down all protruding surfaces on panel as shown. This will allow the cover panel to sit flat on the bezel



Use the main panel as a template. Mark areas to be opened (red arrows). Drill out screw holes using the panel as a guide.(blue arrows)



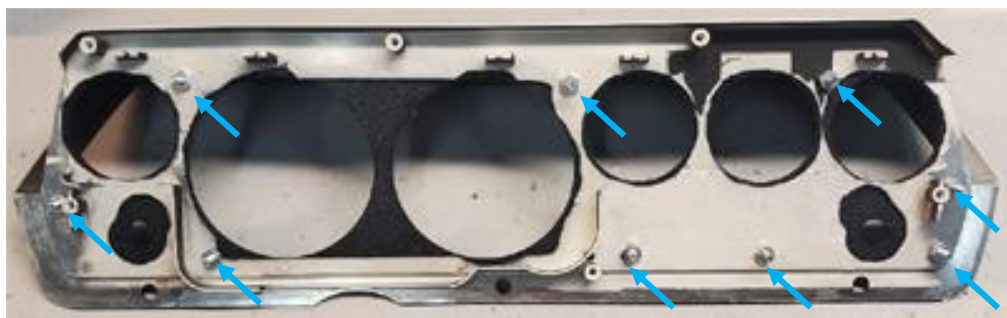
Panel will look like this (nice!)



Remove anything in the way on the back. Its easier sometimes just to cut the flanges off with some side cutters or tin snips.



Install the main panel smooth side up. Use the provided 8-32x3/4 screws, nuts and washers to secure. Tighten snug.



Remove the backing from the black polycarbonate cover. Carefully place on the main bracket. All of the cuts are slightly offset to make installation easier. Once installed, remove the clear protective film. Press down with a soft cloth to ensure adhesion. Use rubbing alcohol to clean when needed.



THIS PAGE IS BLANK



NEW VINTAGE USA
21840 WYOMING PL STE. A
OAK PARK, MI 48237
VOICE: 248.850.5482
FAX: 248.565.8291

www.newvintageusa.com
service@newvintageusa.com